



ASOCIAȚIA NAȚIONALĂ DE ÎNGRIJIRI PALIATIVE



HEALING HEARTS & COMMUNITIES

WORLD HOSPICE & PALLIATIVE CARE DAY 8 OCT 2022

**23<sup>rd</sup> NATIONAL CONFERENCE of ANIP**

**PALLIATIVE CARE in România in 2022.  
Services, education and research**

**Poiana Brașov, 20 – 22 October 2022**

- ❑ Palliative care (PC) services in Romania – current situation
- ❑ Education of professionals in PC
- ❑ PC research projects



# State of services (2021)

❑ Reports submitted by specialist PC service suppliers, according to Ministry of Health (MoH) Order no.253/2018 (A.7) by healthcare units as

- Public healthcare system
- Private charitable healthcare system
- Private for-profit healthcare system

❑ Reports completed online, following request of MoF via county health boards:

Submission deadline: 1<sup>st</sup> June 2022  
(extended + phone contacts)

2021: 92 services reported → 73 providers (70.11%)

(2019: 126 services reported → 94 providers)

1. Inpatient units (UP) (hospital PC units or independent hospices)
2. Home-based PC services;
3. PC outpatient clinics;
4. Day Centres for PC;
5. Mobile PC hospital teams;
6. Call-centres for patients and families;
7. Call-centres for professionals in basic palliative care



# PC providers in 2021

- ❑ **28 counties** → with PC providers having 1 or more services (in different settings or for different categories of patients)

(compared to **31 counties** in 2019)

- ❑ **13 counties** → **have NO specialist PC service at all**

(compared to **11 counties** in 2019)

- ❑ **Reports submitted in 2021:**

- **29,89%** of services reported in 2019 did not report for 2021

- **22,99%** new services reported in 2021, compared to 2019.



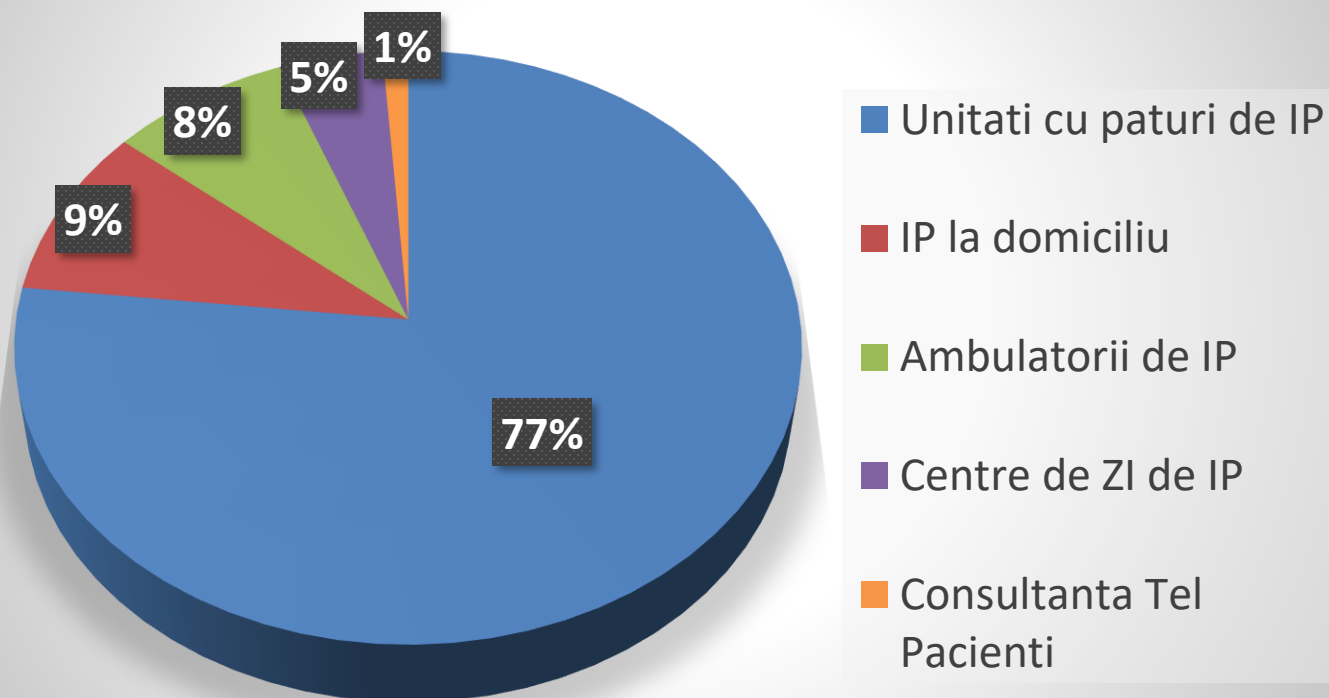
# Services reported in 2019 and missing reports in 2021



Denumirea unitatii	2019	2021	Judetul
Spitalul de Urgenta Alba			AB
CENTRU MEDICAL SPERANTA PENTRU VIATA SRL			ARAD
<b>CENTRUL MEDICAL LASER SYSTEM</b>			ARAD
SC TERAPEUTICA SA			ARAD
Spitalul Clinic Judetean de Urgenta Arad			ARAD
SPITALUL DE BOLI CRONICE CALINESTI			ARGES
Spitalul de Boli Cronice si Geriatrie "C Balaceanu Stolnici"			ARGES
ASOCIATIA LUMINA			BACAU
S.C. POLIMED SRL			BACAU
SC NEW CENTRAL MED SRL			BACAU
SPITAL PNEUMOFTIZIOLOGIE			BACAU
Spitalul Judetean de Urgenta Bacau			BACAU
Spitalul Municipal de Trgenta Moinesti			BACAU
Spital Prof Dr Eduard Apetri			BACAU
<b>Spital Orăşenesc Ştei</b>			BIHOR
<b>Spitalul Clinic Municipal "Dr.Gavril Curteanu"</b>			

# Results: Specialized PC services in 2021

PC services by location of deliveryi  
(n=86)



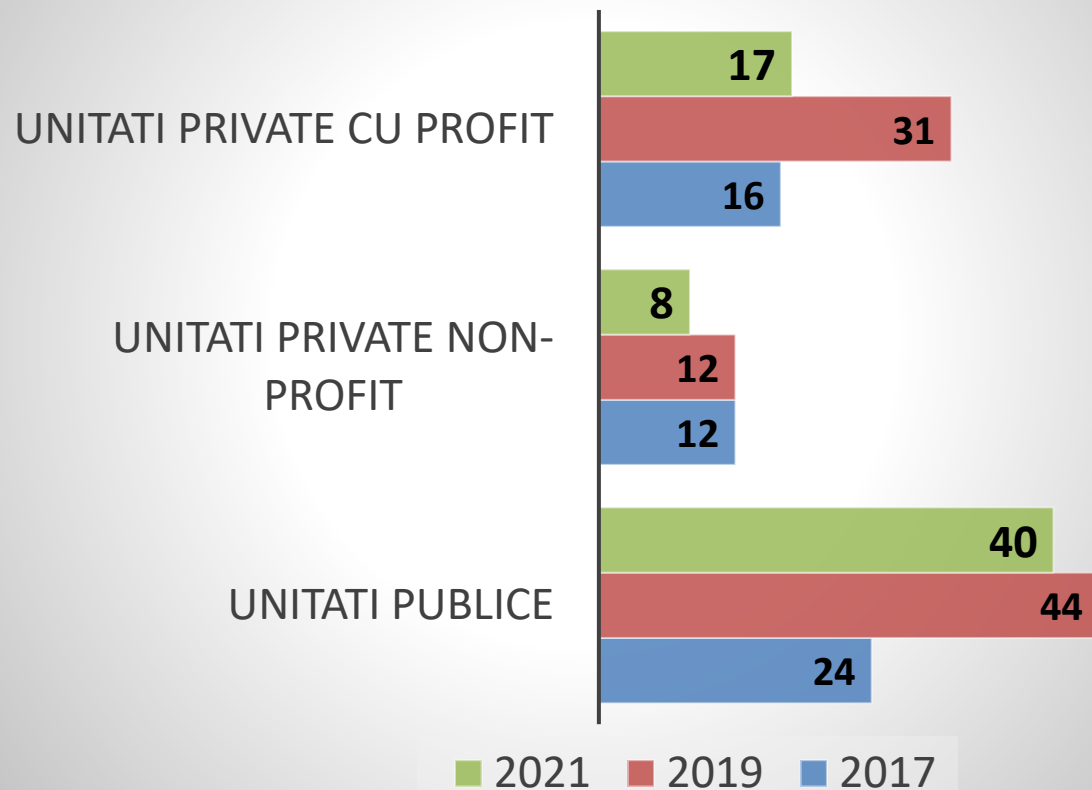
## SPECIALIZED PC SERVICES: 86

- **66** PC inpatient units (77%!)
- **8** home-base palliative care services
- **7** PC outpatient clinics
- **4** PC Day Centres
- **0** PC mobile hospital teams
- **1** Call-centre for patients and families
- **0** Call-centre for professionals



# 1. PC in Inpatient Units

## Evoluția numărului de unități cu paturi de paliative



## ➤ 66 inpatient units

(hospital departments or independent hospices)

- 73,85% public units and private charitable units (=free-of-charge services) unități publice și private-nonprofit (gratuit)
- 26,15% private for-profit units (payment or co-payment)

## ➤ 1435 PC beds

- 848 beds (59,09%) free of charge:
  - 625 beds in public services
  - 223 beds in private charitable services (no payment).
- 1081 beds in private for-profit services (40,91%)



# 1. PC in Inpatient Units

Number of beds authorized by the MoH > Number of beds funded by health insurance (HoHI)

- PC Beds authorized by MoH: 1435 beds
- PC Beds contracted by HoHI: 1081 beds (74,86% of authorized)

By ownership:

- Public hospitals 40 (61,54%)
- Private non-profit 8 (12,31%)
- Private for-profit 17 (26,15%)

48  
(73,85%)

By numbr of PC beds

- Public hospital beds 625 (43,55%)
- Private non-profit beds 223 (15,54%)
- Private for-profit beds 587 (40,91%)

848  
(59,09%)





# 1. PC in Inpatient Units

## PACIENTI in Inpatient units in2021:

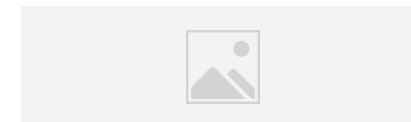
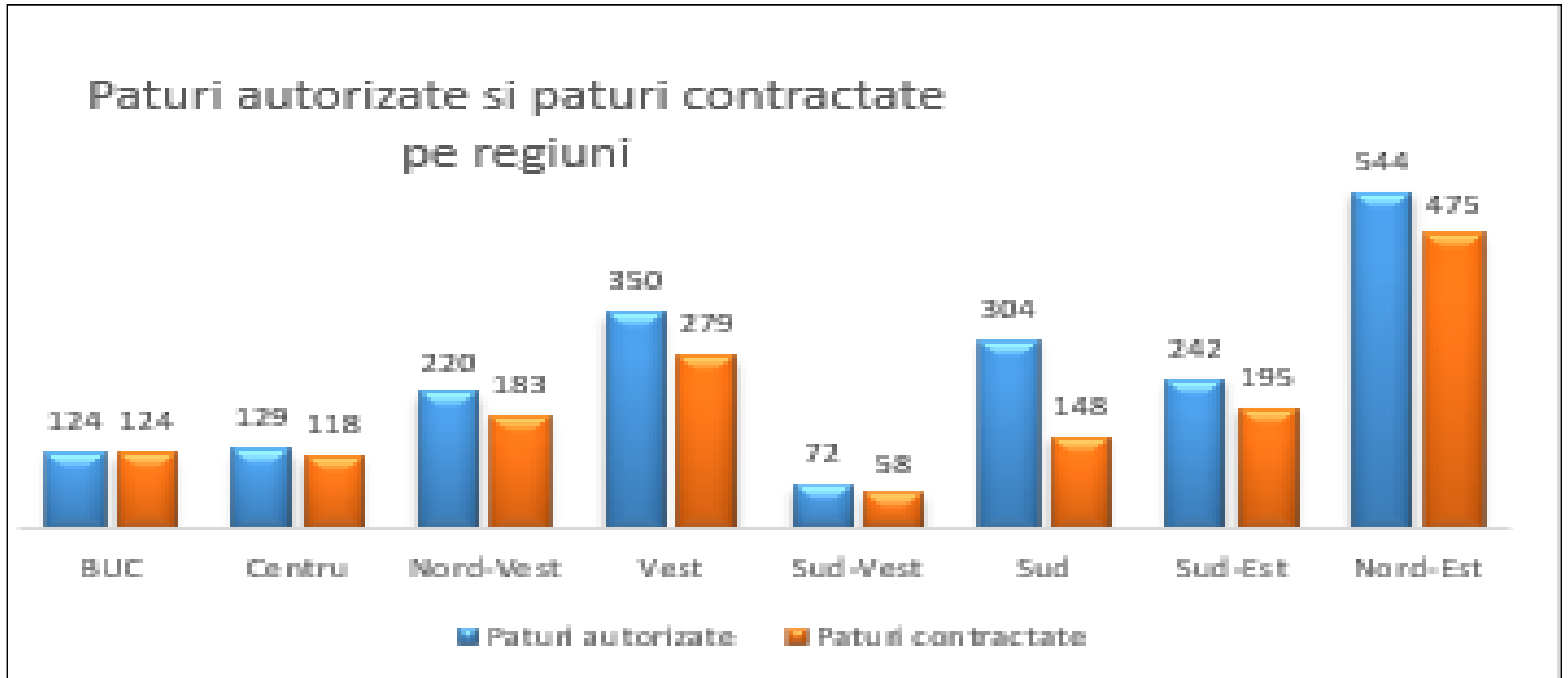
- Total admissions: 6776
- Total HoHI reimbursements: 501 (25,57%)
- Average admission days: 35 days

## ▪ Average costs/admission day:

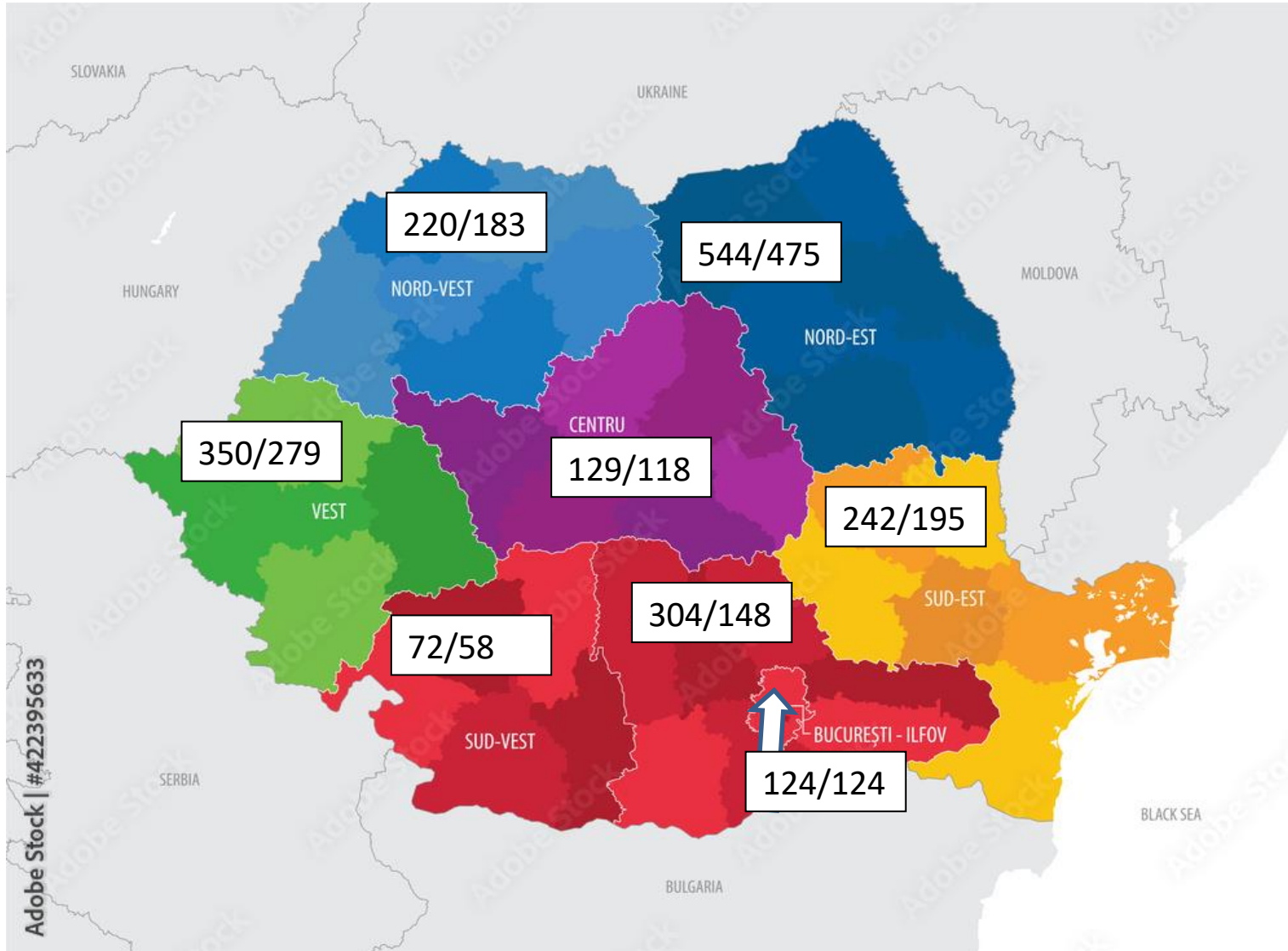
- Average real costs reported: 761 lei/visit
- Reimbursement rate: 235 lei/visit (30,88%%)



# 1. PC in Inpatient Units

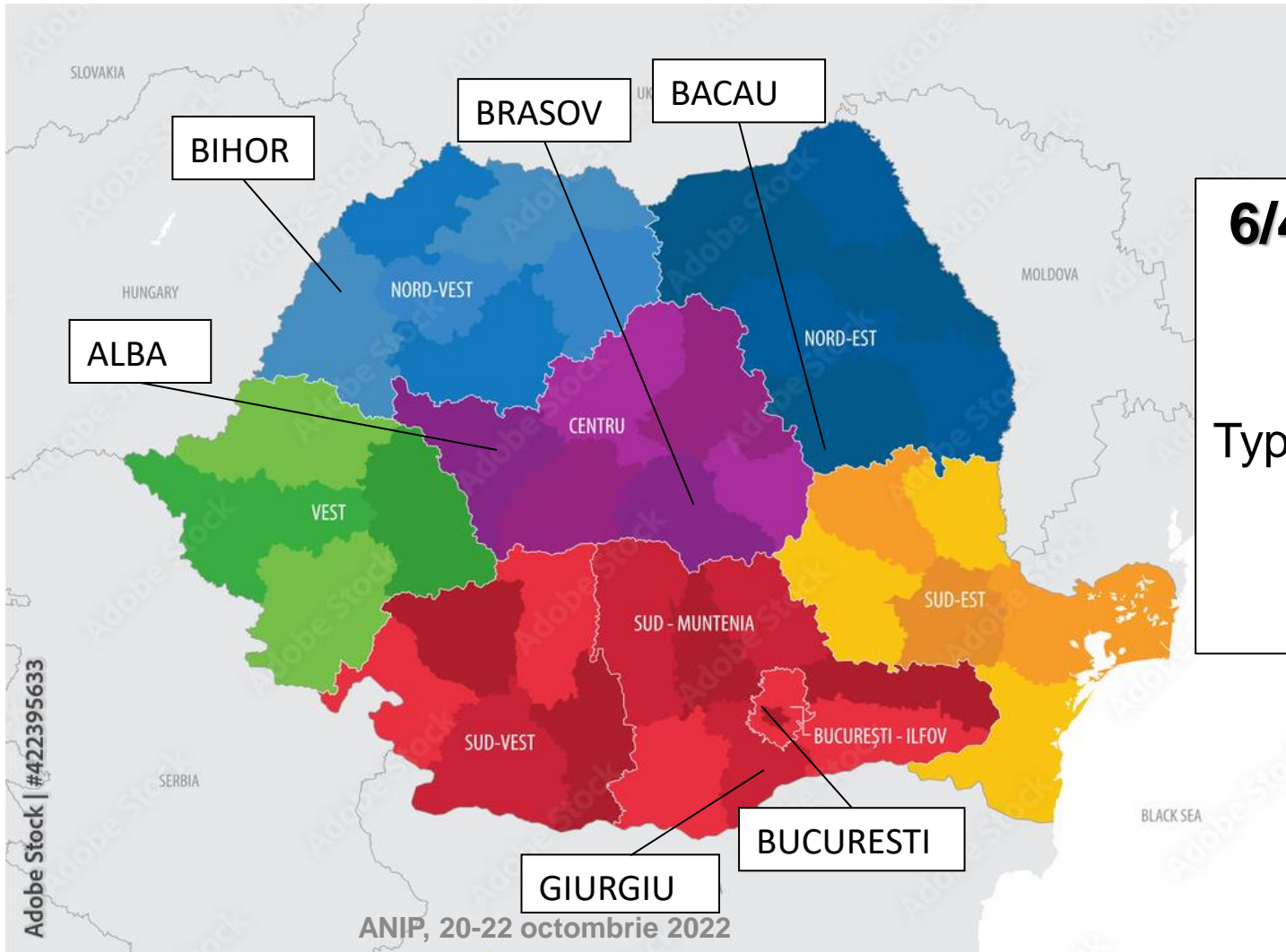


# 1. PC in Inpatient Units



**13 counties with NO inpatient units**

## 2. Home-based PC



**6/41 counties have home-based PC**

**9 services available**

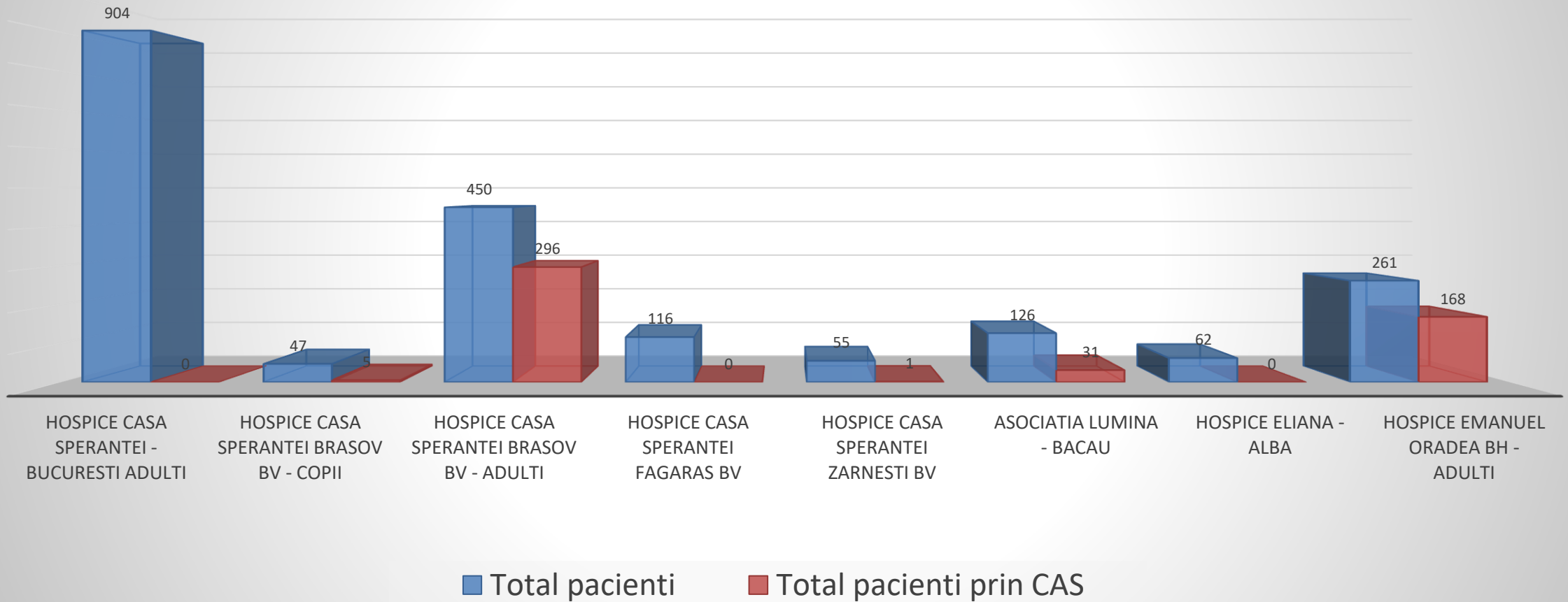
Types of ownership :

- 9 NGO (5 in 2019)
- 0 Ltd Co (4 in 2019)



## 2. Home-based PC

Total Patients assisted at home (n=2021)  
vs Total patients reimbursed by HoHI (n=501)



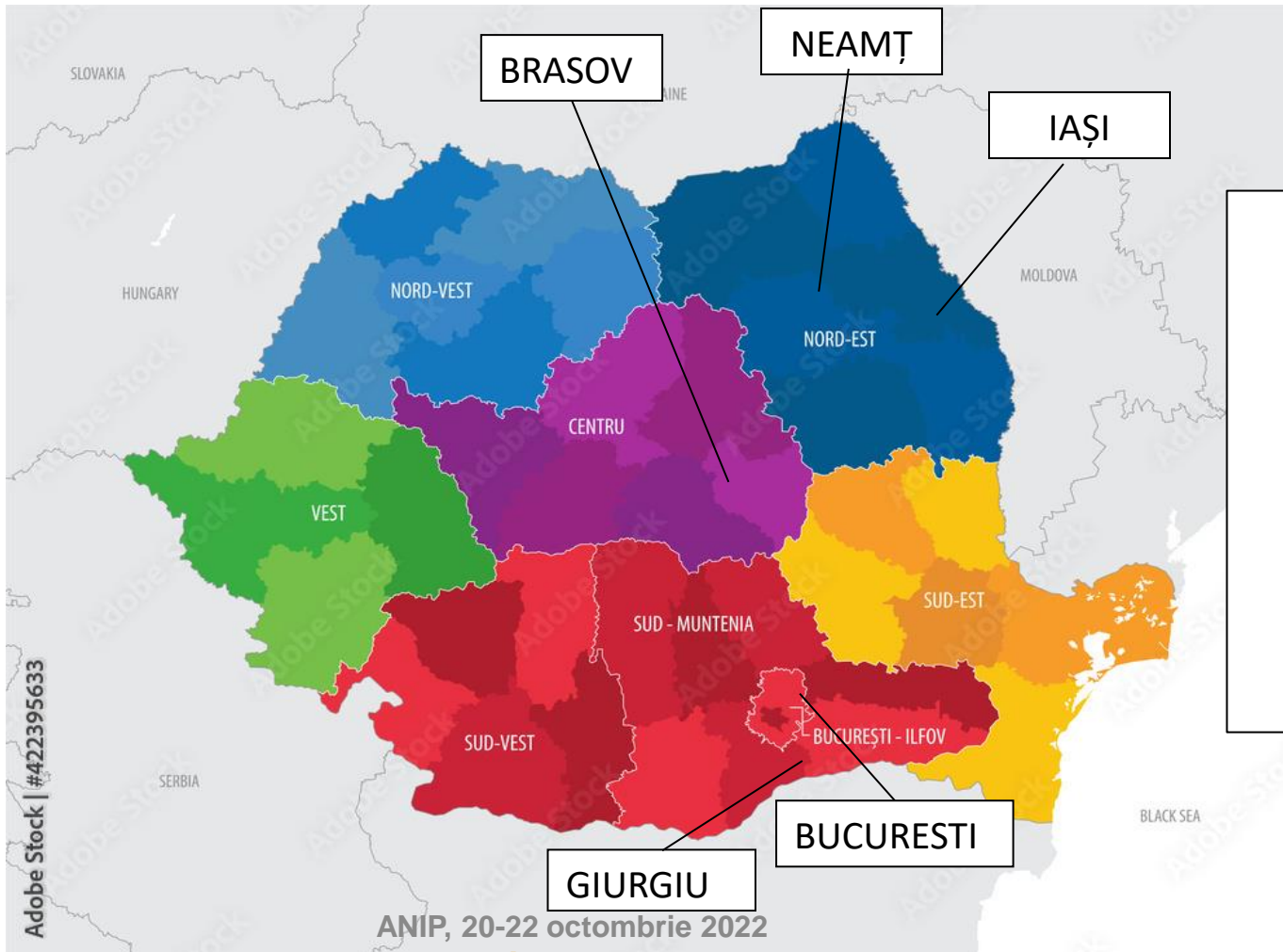
## 2. Home-based PC

- **6** services covered costs for visits from own resourced, supplementing HoHI reimbursement
- **2** services covered costs exclusively from own resources (no contract with HoHI)

- Total patients assisted at home: 1959
- Total patients reimbursed by HoHI: 501 (25,57%)

- **Average cost/home visit:**
- Average real cost reported: 255 lei/visit (about 52 €)
- Cost reimbursed by HoHI: 105 lei/visit (21 € - 41%)

# 3. PC Outpatient clinics



**5/41 counties have outpatient clinics**

**7 servicii available**

Types of ownership:

- 2 in public hospitals
- 1 in NGO (with 3 services in 2 counties)
- 2 Ltd Co.

ANIP, 20-22 octombrie 2022

[www.anip.ro](http://www.anip.ro)



# 4. Day Centres

## 5. Help-line

### Day Centres for PC

- **5 Day centres:**
  - **3 Day centres for children**  
(Bacău, Braşov, Bucureşti)
  - **2 Day centres for adults**  
(Braşov, Bucureşti)

### Help-line pacienți

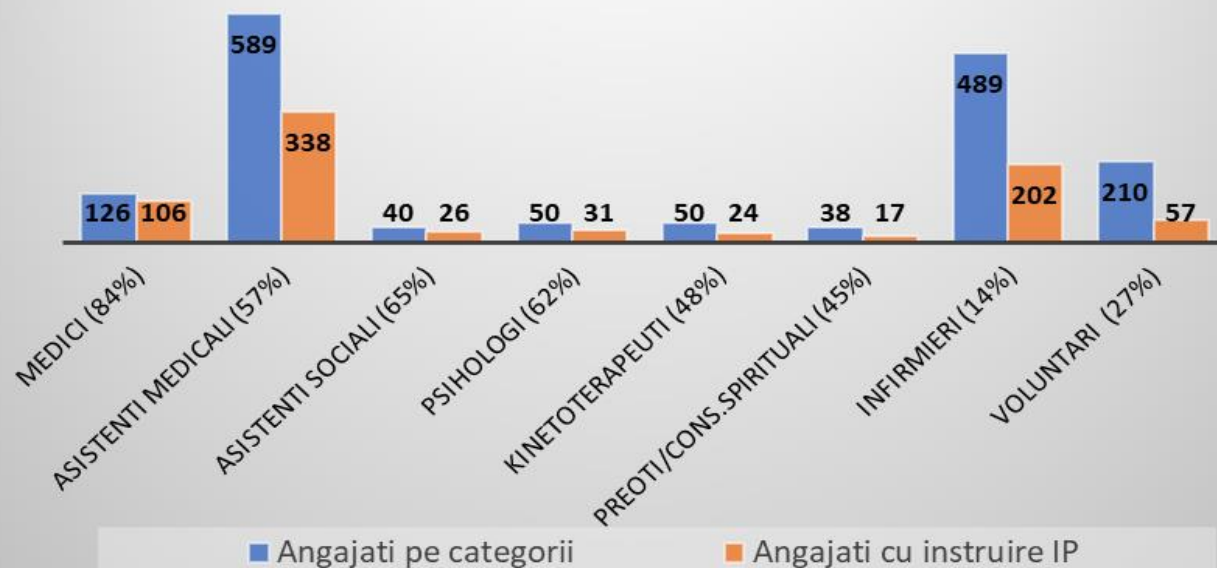
- **1 Help-line**  
(Braşov, Bucureşti)
- **4993 total calls**
  - 4767 calls for monitoring
  - 226 calls for support





# Professionists qualified in PC in services

Categorii de personal și pregătirea de specialitate în îngrijiri paliative



- **126 doctors (17,45% of total doctors with PC competence)** are employed in PC services, amongst which:
  - 106 doctors (**84,13%**) completed PC competence;
  - 4 doctors studying to complete competence/master degree
  - 17 doctors work in 2/3 services.
- **589 nurses** employed, amongst which
  - 338 (57,38%) completed PC specialization

- 20 providers (**18,7%**) ensure multidisciplinary, with 6 of 8 types of professionists (doctors, nurses, social workers, psychologists, carers/nurse assistants, physiotherapists, priests, volunteers),
- 22 (20%) providers don't have enough doctors for the number of PC beds authorized



# Education programmes

❑ **2020-2021 challenges:** Transfer to online/blended: curriculum, teaching methods, adapted technologies

❑ **PC competence for doctors:** 722 doctors

➤ **Completed** in 2022: 110 doctors

➤ **Enrolled** in 2022: 161 doctors

➤ **Competence centres:** Brasov, Bucuresti, Cluj, Iasi, Targu Mures, Timisoara

❑ **Multidisciplinary PC master's degree** (Transilvania University Braşov, Medical Faculty)

TOTAL	2010	2011	2012	2013	2014	2015	2016	2017	2018	2019	2020	2021
422	31	24	23	28	28	25	50	41	28	50	42	52

❑ **PC specialization for nurses:**

➤ **Completed specialization:** 388 asistenti medicali

TOTAL Socializare as med	2019	2020	2021	2022
388	73	77	103	135

❑ **PC courses for multidisciplinary teams**

➤ **Completed:** 47

➤ **Enrolled:** 33

# PC Projects with national impact

## **PAL PLAN 2020- 2023:**

- Developing a National Program for PC
- Harmonize legislation to integrate PC in the healthcare and social system
  - Simplify authorization procedures
  - Adapt healthcare Law nr.95/2006, patients' Law nr.46/2003, MoH Ord.253/2018
- Set up 8 pilot centers with specialized PC services (Outpatient and Home-based) in each of the 8 Romanian development regions;
- Develop/revise standards for PC services (in inpatient units, outpatient clinics and home-based PC)
- Revise and improve PC funding tariffs for HoHI reimbursements

## **EUPCA 2012-2022 ([eupca.eu](http://eupca.eu)):** European Academy for Palliative Care

- Graduated - Series 4 in 2022
- Programme to be converted to international master degree



12<sup>th</sup> World Research Congress of the  
European Association for Palliative Care  
Interactive Online Sessions 18 – 20 May 2022



## Pre-Congress Webinar – EU Funded Projects

Chaired by Professors Sheila Payne and Richard Harding

RESEARCH

	<b>Project</b>	<b>Presenter</b>
1	<b>MyPath</b>	Marie Fallon
2	<b>INSPIRE</b>	Jo Bayly
3	<b>PAL-CYCLES</b>	Jeroen Hasselaar
4	<b>DIADiC</b>	Aline de Vleminck
5	<b>PAL-PD</b>	Angelo Antonini
6	<b>iLIVE</b>	Agnes van der Heide
7	<b>EU NAVIGATE</b>	Tinne Smets
8	<b>PAINLESS</b>	Maria Teresa Carillo
9	<b>C-POS</b>	Lucy Coombes
10	<b>RESPACC</b>	Daniela Mosoiu
11	<b>NursEduPal+</b>	Minna Hökkä
12	<b>MyPal</b>	Sheila Payne
13	<b>Palliative Sedation</b>	Jeroen Hasselaar
14	<b>BETTER-B</b>	Adejoke Oluyase

Chairs:  
Sheila Payne & Richard Harding

RESEARCH

#EAPC2022



# Research and Education programmes with European funding

- MyPath
- INSPiRe
- PAL-CYCLES
- DIADIC
- PAL-PD
- iLIVE
- EU NAVIGATE
- PAINLESS
- C-POS
- RESPACC
- NursEduPal+
- MyPal
- Palliative Sedation
- BETTER-B

**“Patient-centered care pathways. More involvement of patients – better patient care?”**



- Evidence for effectiveness of patient-centered care (RCTs)

Time frame: 2022-2027

**AIM:**

Develop digital patient-centered care pathways, with incorporated patient-reported outcome measures

Carry out a large scale implementation of pathway in 9 centers

**Parteners:**

- Consortium of 14 partners (incl. Romania, HCS)

**Details:**

<https://www.eapcnet.eu/eu-funded-palliative-care-research/>



# Research/Education in PC(2)

## Integrated Short-term Palliative Rehabilitation

Integrated short-term palliative rehabilitation to improve quality of life and equitable care access for people affected by incurable cancer (RTC)

### **AIM:**

To test then clinical and cost effectiveness of an integrated short-term palliative rehabilitation intervention for people with incurable cancer

- Evaluate if a person centered rehabilitation intervention reduces symptom burden and disability, leading to better quality of life
- Test if intervention reduces burden of care for families
- Identify an effective model of rehabilitation as part of routine care for people with cancer

### **• Details:**

<https://www.eapcnet.eu/eu-funded-palliative-care-research/>

## Palliative Care Yields Cancer WellBeing Support



Time frame: 2022-2026

**AIM: Develop, test and implement a transitional care program for palliative care between hospital and community**

- Customize a transitional programme sensitive to differences in healthcare systems in different countries in Europa
- Clinical study in 14 units of 7 European countries
- Training of oncologists, GPs and hospital/community nurses, to identify patients with needs of PC
- Implementation in all clinical settings of the project

### Parteneri din:

- Large group of international researchers
- Consortium: 10 partners in 9 European countries (Incl Romania HCS) țări europene – între care și Romania (HCS)

**Detalii:** <https://www.eapcnet.eu/eu-funded-palliative-care-research/>





# Research/Education in PC(4)

## Evaluation of Dyadic Psychosocial and Educational Interventions

### for People with Advanced Cancer and Their Informal Caregivers (international RCT)

Time frame: 2019-2023

#### **AIM:**

- Evaluate the effectiveness, cost-effectiveness and mechanisms of action of two psycho-educational interventions aimed at improving emotional functioning of patients with advanced cancer and their caregivers (=dyad)
- 1) nurse intervention, 2) web-based intervention – 4 sessions for dyads
- Current recruitment stage (165 dyads per country) – slower than expected
- Prove effectiveness of intervention for patient and family in various European countries

#### **Parteneri din:**

- 6 countries (B, DK, IR, IT, UK, NE)
- **Detalii:**

<https://www.eapcnet.eu/eu-funded-palliative-care-research/>



# Research/Education in PC(5)

## **PD-PAL (Palliative Care for patients with Parkinson Disease)**

### **AIM:**

Elaborate and validate a model of intervention for the care of patients with Parkinson Disease. To identify the patients' and families' needs, advance care planning and multidisciplinary guide for patient and family.

**Parteneri din:** B, NL, UK, IT

**Detalii:** <https://www.eapcnet.eu/eu-funded-palliative-care-research/>

## “Live well, die well”



### AIM:

Improve care of persons in need of care at the end of life

- Ingrijire personalizata de calitate la sfarsitul vietii
- Dezvoltarea unui ghid digital pentru clinicieni in optimizarea medicatiei individualizate
- Program de instruire a voluntarilor in sprijinul pacientilor care decedeaza in spital
- Evaluarea cost-eficientei programului pentru instrumentul de medicatie si programul de voluntari
- Stimularea implicarii comunitatii in ingrijirea persoanelor la finalul vietii

### Partners:

- Cultural diversity of countries participating: over 20 partners from 13 countries (Europa + NZ, AUS, AR) incl. România (involved in the different WP1-9)

Detalii: <https://www.iliveproject.eu>

**AIM:**

- To implement a model of patient and family centered navigation program (NavCare-EU), for cancer patients, along the continuum of care, the supportive care, palliative care, survivorship and end-of-life care
- Evaluarea eficienței intervenției pentru pacienți, familii, îngrijitori

**Parteneri din:**

- **Belgia, Olanda, Anglia, Germania, Spania, Italia, Ungaria și România**

**PAINLESS**

# Research/Education in PC(8)

**Atenuarea durerii în îngrijirea paliativă in cancer, folosind neuromodularea la domiciliu și biomarkeri predictivi**



## **3 studii:**

- Studiul 1: Elaborarea unui instrument predictiv pentru durerea in cancer  
    Studiu multicentric in 5 unitati clinice (Spania, Danemarca, Portugalia, Romania)
- Studiul 2: Caracteristici si stratificare a pacientior cu cancer (500 pacienti cu cancer si durere, 250 pacienti cu cancer si fara durere)  
    Studiu multicentric in 8 clinici din 5 tari
- Studiul 3: Stimulare transcraniana pentru durere in cancer la pacienti ingrijiti la domiciliu (450 pacienti)

## **Parteneri din:**

- 17 parteneri din 10tari, intre care si Romania (HCS): Spania, Portugalia, Franta, Belgia, Elvetia, Danemarca, Germania, Rep.Ceha, Romania, Israel

**Detalii:** <https://www.eapcnet.eu/eu-funded-palliative-care-research/>

## C-POS (Children's Palliative Care Outcome Scale)

### SCOP>

Dezvoltarea unui instrument de măsură a rezultatelor centrate pe copil și familie, care poate fi utilizat de copiii și tineri și de familiile acestora afectate de o boala care limitează viața și de a testa proprietățile psihometrice ale acestuia.

Faza 1: Dezvoltare> Identificarea pacienților, familiilor acestora profesioniștilor, generarea C-POS

Faza 2: Validarea instrumentului

Faza 3: Implementare: elaborarea ghidului de implementare în practică, adaptare, traducere

### Parteneri din:

- UK, cu colaborări internaționale

Detalii: <https://www.eapcnet.eu/eu-funded-palliative-care-research/>



## **RESPACC = “Research for All Palliative Care Clinicians” (2020-2022) Erasmus+**

**SCOP:** Introducerea competențelor de cercetare de bază în practica de zi cu zi a clinicienilor din îngrijirea paliativă. Aceasta va permite clinicienilor din toate specialitățile relevante să aprecieze importanța integrării cercetării în practica clinică, să își dezvolte capacitatea de cercetare atât în citirea/evaluarea lucrărilor de cercetare, cât și în efectuarea propriilor cercetări și implicit în îmbunătățirea calității serviciilor oferite pacienților.

1. Definirea Competențelor de baza de cercetare pentru echipa multidisciplinara; revizie de literatura, studiu pe grupuri nominale – 7 domenii cu 17 competente; Quizz de auto-evaluare in fiecare domeniu
2. Introducerea competentelor de citire critica si scriere academica: curriculum de 18 ore, 1 ghid si 4 webinarii
3. Transferul experienței clinice in proiecte de cercetare: ghid de elaborare a unui proiect de cercetare, exemple video,
4. ABC-ul cercetarii: Program de instruire in metodologii de cercetare (corelat cu Quizz): materiale de instruire deschise pentru public si instruire online free, materiale pre-inregistrate

### **Parteneri în proiect:**

- [Hospice Casa Sperantei, Romania \(Coordonator\)](#)
- European Association for Palliative Care, Belgia
- Universitatea Navarra, Spania
- [Transilvania Universitatea Transilvania, Brasov, Romania](#)
- Centrul de Ingrijiri Paliative “Galilee”, Grecia

**Detalii** despre Matricea de *Competențe de bază în cercetare pentru clinicienii din domeniul îngrijirii paliative*, **aici:**

<https://www.eapcnet.eu/wp-content/uploads/2021/11/RESPACC-Framework-RO.pdf>



# Research/Education in PC (11)



## SCOP:

**Îmbunătățire calitatății învățământului superior în domeniul educației în îngrijiri paliative pentru asistenții medicali, prin:**

1. Elaborarea unui raport privind competențelor de bază comune în îngrijirea paliativă europeană
2. Dezvoltarea de „instrumente” educaționale inovatoare pentru educația în domeniul îngrijirilor paliative
3. Formarea educatorilor în modul de lucru cu competențele de bază ale matricei europene de îngrijire paliativă (un set de instrumente pentru educatori) pentru a introduce aceste instrumente inovatoare în curriculum

## Parteneri în proiect:

- Kajaani University of applied science (KAMK, Finlanda),
- HOWEST University of applied science (HOWEST, Belgia),
- Universitatea Transilvania of Brasov (UTBV, Romania),
- Paracelsus Medicinische Privatuniversität, PMU, Austria, Dr. Piret Paal
- European Association for Palliative Care (EAPC, Belgia)

**Detalii despre *Competențe de bază în îngrijiri paliative și noua matrice europeană în educația asistenților medicali pentru studii de licență, aici:***

<https://nursedupal.eu/>

Task Force in EAPC – Innovation in Nurse Education





# Research/Education in PC (12)

Ingrijirea paliativa pentru copii si adulti cu cancer, prin sisteme avansate de raportare a rezultatelor de catre pacient

## Inovatie tehnica

### Parteneri din:

- Belgia, Olanda, Anglia, Germania, Spania, Italia, Ungaria și România

### Detalii: Clinical Aspects of Palliative Sedation in Prospective Studies. A Systematic Review

Maria Arantzamendi, RN, PhD, Alazne Belar, RN, PhD, Sheila Payne, RN, PhD, Maaïke Rijpstra, MSc, Nancy Preston, RN, PhD, Johan Menten, MD, PhD, Michael Van der Elst, MSc, Lukas Radbruch, MD, PhD, Jeroen Hasselaar, PhD and Carlos Centeno, MD, PhD *Journal of pain and symptom management*, 2020-09-19

DOI:<https://doi.org/10.1016/j.jpainsymman.2020.09.022>



# Research/Education in PC (13)



**”Utilizarea sedării paliative proporționale pentru ameliorarea simptomelor refractare”** – proiect finanțat prin program Uniunii Europene Orizont 2020

## **SCOP:**

Investigarea practicilor curente în utilizarea sedării paliative în mai multe țări europene. Proiectul va investiga practicile și liniile directoare actuale, va conține un studiu clinic prospectiv despre sedarea paliativă.

Studiu observational multicentric internațional în 5 centre de îngrijiri paliative

Studiu calitativ în 5 centre de îngrijiri paliative, pentru înțelegerea practicilor din perspectiva medicilor, asistentelor medicale și a familiilor îndoliate

Moral case deliberation în 16 centre din țări europene

Analiza cost-consecință și formularea de recomandări pentru un cadru EAPC actualizat al sedării paliative.

Vor fi analizate asemănările și diferențele atât în ceea ce privește aspectele clinice cât și etice, vor fi revizuite practici europene curente (din 2009)

Este prevăzut un program de învățare online și un atelier de politici pentru dezvoltarea și implementarea ulterioară.

## **Parteneri din:**

- **Belgia, Olanda, Anglia, Germania, Spania, Italia, Ungaria și România**

## **Detalii: Clinical Aspects of Palliative Sedation in Prospective Studies. A Systematic Review**

Maria Arantzamendi, RN, PhD, Alazne Belar, RN, PhD, Sheila Payne, RN, PhD, Maaïke Rijpstra, MSc, Nancy Preston, RN, PhD, Johan Menten, MD, PhD, Michael Van der Elst, MSc, Lukas Radbruch, MD, PhD, Jeroen Hasselaar, PhD and Carlos Centeno, MD, PhD *Journal of pain and symptom management*, 2020-09-19

DOI: <https://doi.org/10.1016/j.jpainsymman.2020.09.022>

[www.palliativesedation.eu](http://www.palliativesedation.eu)

Better Treatments for Breathlessness in Palliative Care and End of Life Care

**SCOP:**

- Explorarea practicilor curente in managementul dispneei in Europa
- Testarea eficientei si cost-eficientei mirtazapinei in dispneea cronica la pacienti cu BPOC
- Elaborarea si diseminarea unui ghid european accesibil multilingv de management al dispneei in ingrijirea paliativa si ingrijirea la sfirsitul vietii

**Parteneri din:**

- Polonia, Germania, Italia, Irlanda, Elvetia, UK si Australia

Detalii: <https://www.eapcnet.eu/eu-funded-palliative-care-research/>

# EAPC News, 2022 - 2023

EAPC 2023 18th World Congress Registration now open

## EAPC 2023

European Association for Palliative Care  
18th World Congress

**EQUITY & DIVERSITY**



15 - 17 June 2023 | Rotterdam | The Netherlands



**Abstract submission deadline 15th October 2022!**

Abstracts submission deadline:

**31 October 2022**

<https://eapccongress.eu/2023/abstract-submission/>

ANIP, 20-22 octombrie 2022  
[www.anip.ro](http://www.anip.ro)

**A N I P**  
ASOCIATIA NATIONALA DE INGIJIRI PALIATIVE

# EAPC, 2022 - 2023

## Our EAPC Groups

### Reference Groups

Aging and Palliative Care  
Children & Young People  
Education and Training in Palliative Care  
Family Carers  
Intellectual Disability  
Neurology  
Primary Care  
Public Health  
Spiritual Care  
Research Network

### Task Forces

Advance Care planning in Dementia  
Big Data in End-of-Life Care Research  
Bereavement  
Costs of Family Caregiving  
Healthcare Guidelines  
Improving Care for LGBT+ People  
Innovation in Nurse Education  
Last Aid  
Leadership  
Occupational Therapy in Palliative Care  
Palliative Sedation  
Palliative Wound care  
Palliative Care for Prisoners  
Palliative Care for Refugees and Migrants  
Social Work  
Volunteering  
Wish to hasten Death  
Research Network Junior Forum



# EAPC, Reference Groups

## EAPC Reference Groups

[Aging and Palliative Care](#)

[Children & Young People](#)

[Education and Training in Palliative Care](#)

[Family Carers](#)

[Intellectual Disability](#)

[Neurology](#)

[Primary Care](#)

[Public Health](#)

[Spiritual Care](#)

[Palliative Sedation](#)

[Palliative Wound Care](#)

[Prisoners](#)

[Refugees & Migrants](#)

[Social Work](#)

[Volunteering](#)

[Wish to Hasten Death](#)

EAPC Reference Groups are formed by teams who have previously served on a Task Force and who have clearly demonstrated their ability to deliver on multiple projects with demonstrable outputs. Examples include white papers, policy documents and tools for practice and research.

EAPC Reference Groups will have a core group membership of at least five people representing geographical and professional diversity and who demonstrate expertise in the particular area. The group will have an 8-year (maximum) time frame to achieve their objectives.

Click on the titles of each group to learn more about their work.

[EAPC Reference Group Application form](#)

# EAPC, Task Forces

## EAPC Task Forces

ACP in Dementia

Big Data in End-of-Life Care Research

Bereavement

Costs of Family Caregiving

Healthcare Guidelines

Last Aid

Leadership

Innovation in Nurse Education

Improving care for LGBT+ people

Occupational Therapy in Palliative Care

EAPC Task Forces are formed by interested EAPC members from a range of disciplines and different countries, who work collaboratively on a specific time-limited project. Task Forces may be formed to work on specific issues related to palliative care, for example palliative sedation, bereavement, heart disease or may be focussed on a particular discipline, for example volunteering, social work, palliative care for marginalised groups.

EAPC Task Forces will have a core group membership of at least five people representing geographical and professional diversity and who demonstrate expertise in the particular area. The group will have a 3-year (maximum) time frame to achieve their objectives.

Click on the headings to learn more about each of our active task forces.

[EAPC Task Force Application Form](#)

Palliative Sedation

Palliative Wound Care

Prisoners

Refugees & Migrants

Social Work

Volunteering

Wish to Hasten Death

# EAPC News, 2022 - 2023

## Forthcoming EAPC webinars

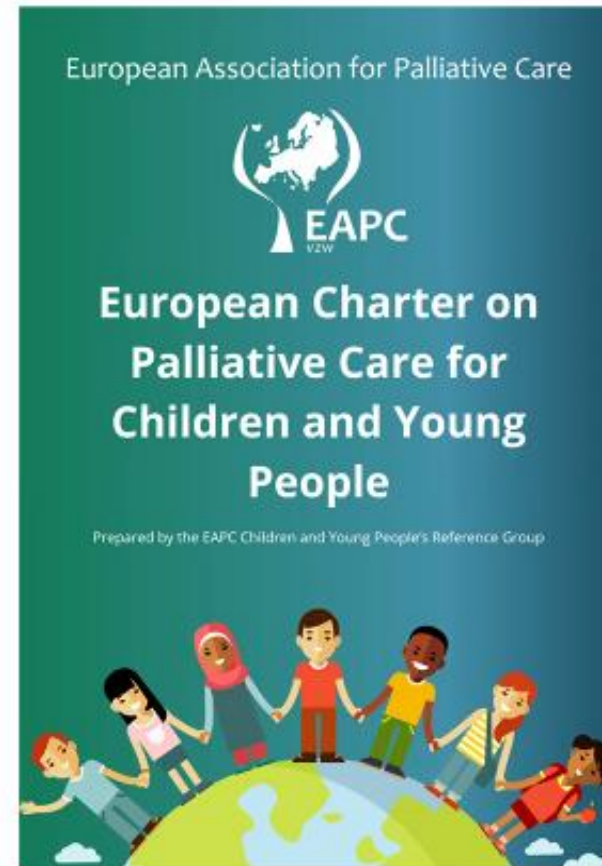
### Webinars:

**14<sup>th</sup> October** – [Launch of the European Charter on Palliative Care for Children & Young People](#)

**15<sup>th</sup> November** – [Palliative Care for people with ALS/MND](#) (Neurology RG)

**30<sup>th</sup> November** – [Childhood Bereavement](#) (Social Work TF)

**13<sup>th</sup> December** – [Palliative Care and Neurology: Models of Collaboration](#) (Neurology RG)





# ANIP in 2022. Where to?

2022 – Elections for the National Council and President

Involvement in the next HoHI Frame Contract

Involvement in current and future education and research projects

Improve ANIP membership